

Light efficiency:

103 Lumen/Watt

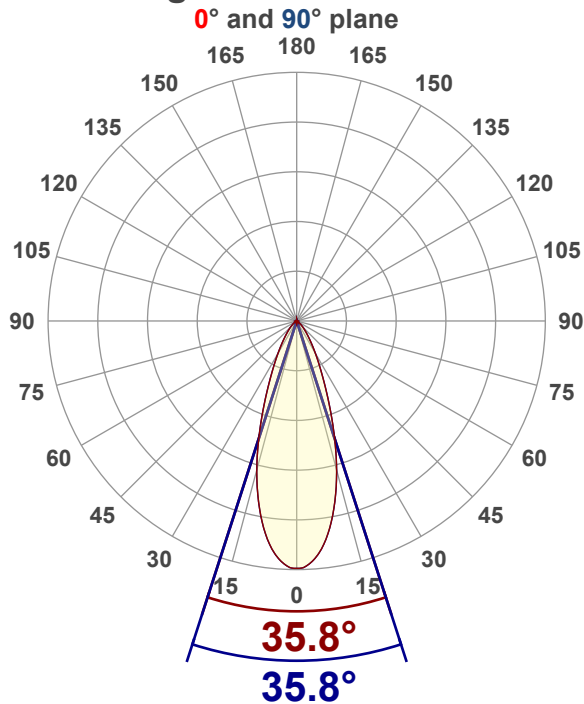
Color temperature:

3026 K

Light quality:

CRI:96.5, R_g:92.0, R_f:100.2**P: 2 / V: - / F: 2****Output: 1159 lm****Peak: 2415 cd****Power: 11.2 W****Voltage: 120 V****Current: 0.096 A****PF: 0.97****THD: 15.26 %**

Angular Distribution



Product name:

RA4-12G-90WH - 3000K

Test Date:

12/12/2025

Beam Angle (50% of the brightness of the centre):

35.8°

Field Angle (10% of the brightness of the centre):

68.2°

Cut Off Angle (2.5% of the brightness of the centre):

96.4°

Beam Details

*measured at centre of beam

Mounting Height (feet)\(meter)	Lux*	Footcandles*	Beam width (feet) / (meter)
4 ft / 1.2 m	1624 lx	151 fc	2.6 ft / 0.8 m
8 ft / 2.4 m	406 lx	38 fc	5.2 ft / 1.6 m
12 ft / 3.7 m	180 lx	17 fc	7.7 ft / 2.4 m
16 ft / 4.9 m	102 lx	9 fc	10.3 ft / 3.1 m
20 ft / 6.1 m	65 lx	6 fc	12.9 ft / 3.9 m

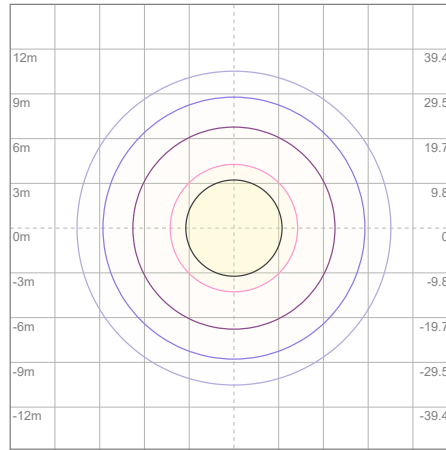
Beam center

Photometric Testing Report

Zonal Lumen Summary

Zone	Lumen	%Luminaire
0-30	899	77.57%
0-40	1041	89.82%
0-60	1135	97.93%
60-90	21.8	1.88%
70-100	8.26	0.71%
90-120	0.634	0.05%
0-90	1157	99.83%
90-180	1.79	0.15%
0-180	1159	100.00%

ISO Lux Diagram



Lux at center:	260 lx
3%	7.80 lx
5%	13.00 lx
10%	26.00 lx
30%	78.00 lx
50%	130.00 lx

Conditions:
Number of planes: 8
Lux distribution on a surface when lamp is mounted at 3.05 meters from the surface.

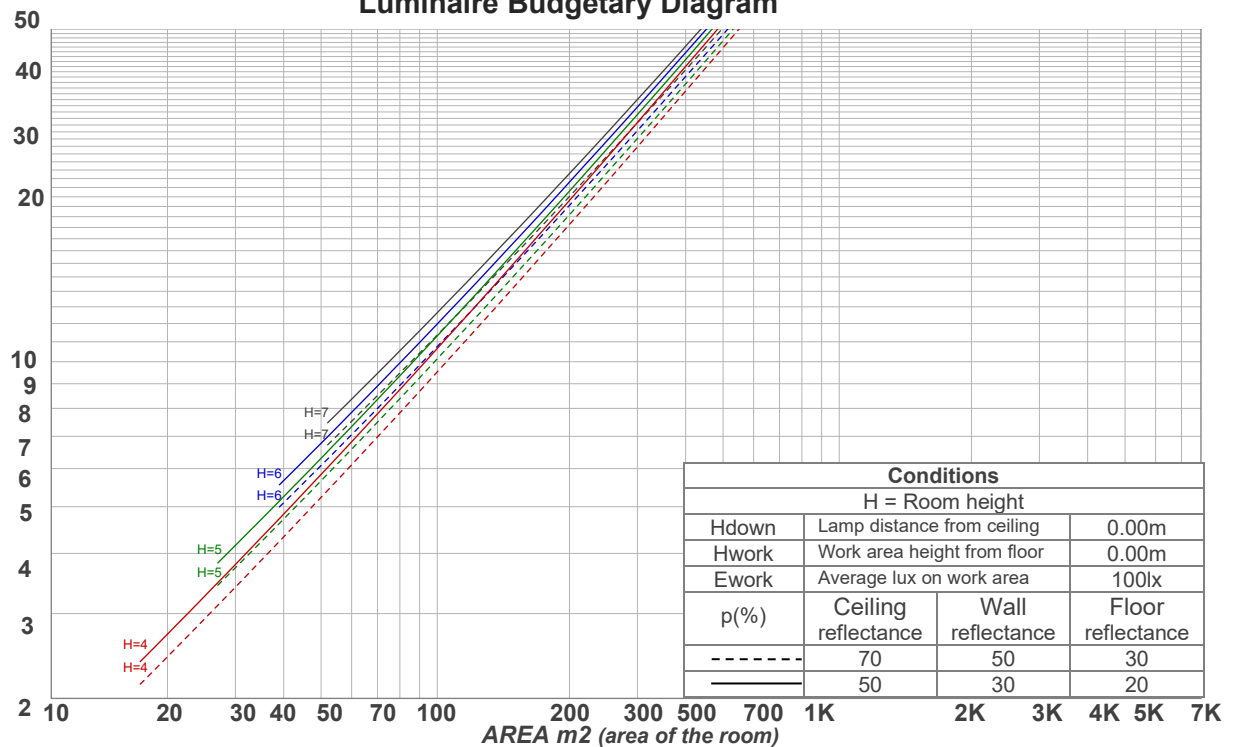
Mounting height: 3.05 meters (10 feet)

Coefficients of Utilization

Ceiling reflectance	80				70				50			30			10			0
Wall reflectance	70	50	30	10	70	50	30	10	50	30	10	50	30	10	50	30	10	0
Floor reflectance	20	20	20	20	20	20	20	20	20	20	20	20	20	20	20	20	20	0
RCR	(RCR: Room Cavity Ratio)				Room Values are expressed as percentage of Lumens delivered to the task surface													
0	119	119	119	119	116	116	116	116	111	111	111	106	106	106	102	102	102	100
1	114	111	109	106	111	109	107	105	105	103	101	101	100	98	98	97	96	94
2	108	104	100	97	106	102	99	96	99	96	93	96	93	91	93	91	89	88
3	103	97	93	89	101	96	92	88	93	90	87	91	88	85	89	86	84	83
4	99	92	86	82	97	90	86	82	88	84	81	86	83	80	85	82	79	78
5	94	87	81	77	93	86	81	77	84	79	76	82	78	75	81	77	75	73
6	90	82	76	72	89	81	76	72	80	75	72	78	74	71	77	74	71	69
7	86	78	72	68	85	77	72	68	76	71	68	75	71	68	74	70	67	66
8	83	74	69	65	82	74	68	65	73	68	64	72	67	64	71	67	64	63
9	80	71	65	62	79	70	65	62	69	65	61	69	64	61	68	64	61	60
10	77	68	62	59	76	67	62	59	66	62	59	66	61	58	65	61	58	57

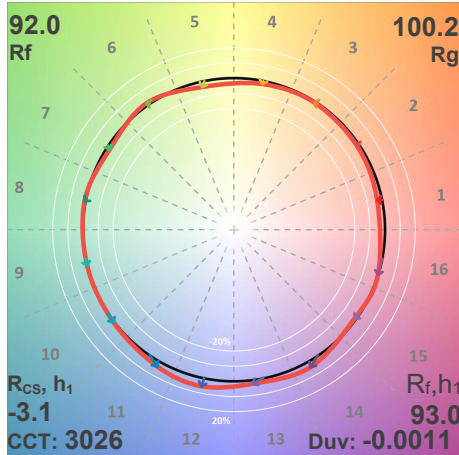
LAMPS (number of lamps)

Luminaire Budgetary Diagram

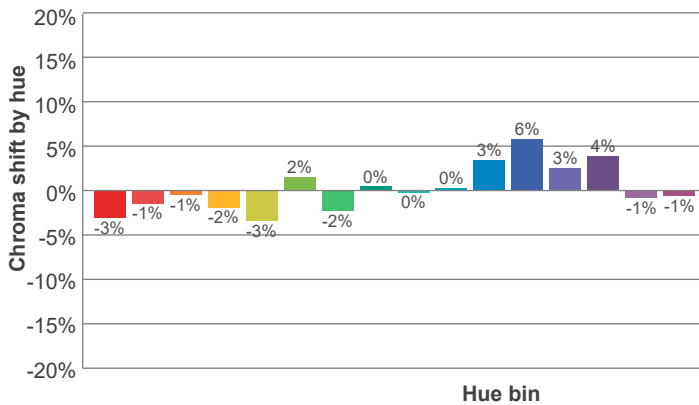
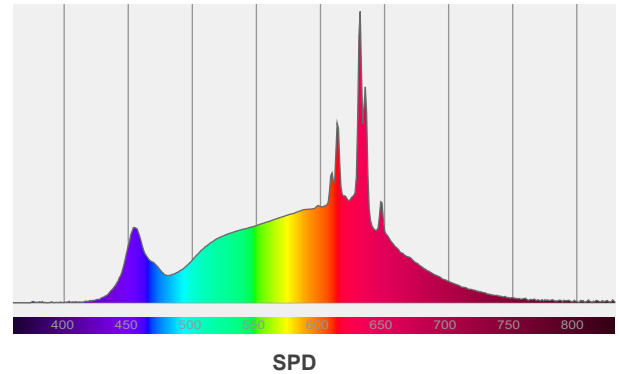
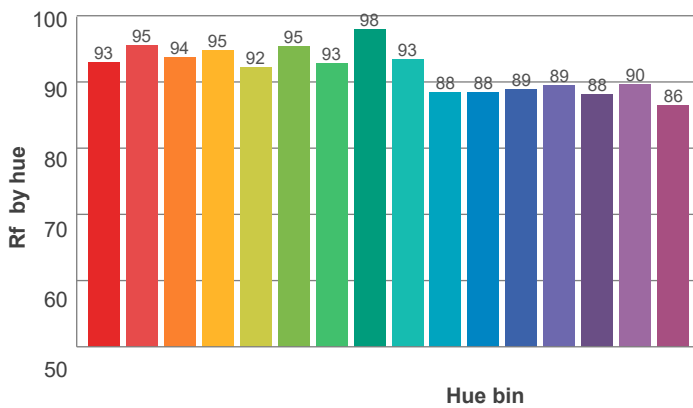
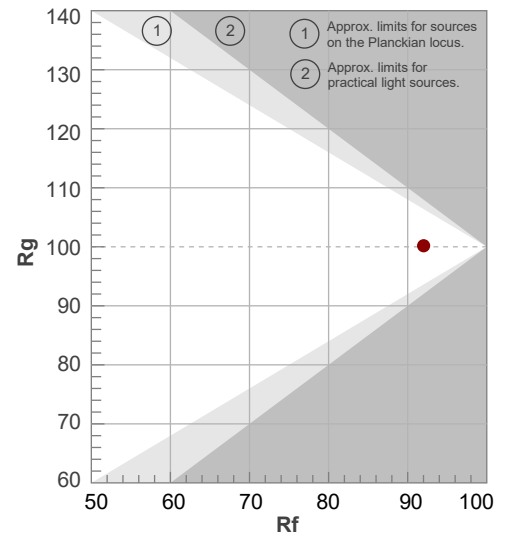


ANSI/IES TM-30-18

P: 2 / V: - / F: 2



Hue Bin	R _f	Shifts (%)	
		Chroma	Hue
1	93	-3%	1%
2	95	-1%	1%
3	94	-1%	3%
4	95	-2%	0%
5	92	-3%	2%
6	95	2%	2%
7	93	-2%	2%
8	98	0%	1%
9	93	0%	5%
10	88	0%	7%
11	88	3%	8%
12	89	6%	-1%
13	89	3%	-7%
14	88	4%	-8%
15	90	-1%	-5%
16	86	-1%	-11%



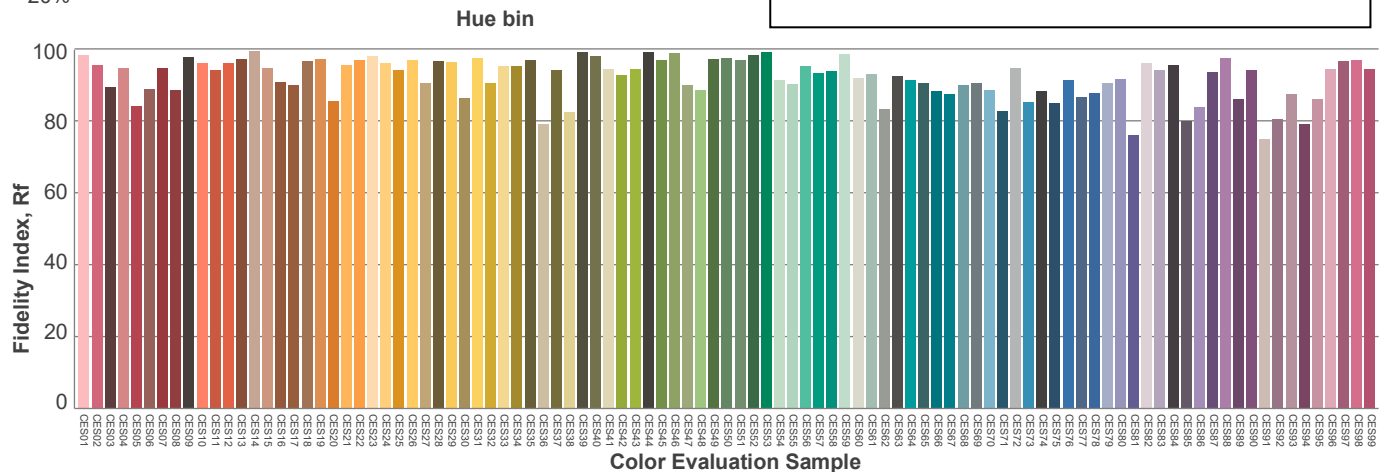
Red: 33.8%, Power=6.8mW

Blue: 10.4%, Power=7.7mW

Green: 26.6%, Power=14.3mW

UVA: 0.1%, Power=0.2mW

Dominant Wavelength: 584nm

1st Peak Wavelength: 631nm2nd Peak Wavelength: 613nm

Glare Evaluation According to UGR

p Ceiling		70	70	50	50	30	70	70	50	50	30
p Walls		50	30	50	30	30	50	30	50	30	30
p Floor		20	20	20	20	20	20	20	20	20	20
Room size X Y		Viewing direction at right angles to lamp axis					Viewing direction parallel to lamp axis				
2H	2H	21.6	22.2	21.7	22.4	22.6	21.6	22.2	21.7	22.4	22.6
	3H	21.6	22.3	22.0	22.5	22.7	21.6	22.3	22.0	22.5	22.7
	4H	21.7	22.3	22.0	22.6	22.8	21.7	22.3	22.0	22.6	22.8
	6H	21.8	22.3	22.1	22.6	23.0	21.8	22.3	22.1	22.6	23.0
	8H	21.7	22.3	22.1	22.6	23.0	21.7	22.3	22.1	22.6	23.0
	12H	21.7	22.2	22.1	22.6	23.0	21.7	22.2	22.1	22.6	23.0
4H	2H	21.4	22.1	21.8	22.4	22.6	21.4	22.1	21.8	22.4	22.6
	3H	21.7	22.3	22.1	22.6	23.0	21.7	22.3	22.1	22.6	23.0
	4H	21.8	22.3	22.2	22.7	23.2	21.8	22.3	22.2	22.7	23.2
	6H	21.8	22.4	22.3	22.7	23.1	21.8	22.4	22.3	22.7	23.1
	8H	21.8	22.3	22.4	22.7	23.0	21.8	22.3	22.4	22.7	23.0
	12H	21.8	22.2	22.3	22.6	23.1	21.8	22.2	22.3	22.6	23.1
8H	4H	21.7	22.2	22.2	22.6	22.9	21.7	22.2	22.2	22.6	22.9
	6H	21.9	22.2	22.4	22.7	23.2	21.9	22.2	22.4	22.7	23.2
	8H	22.0	22.2	22.5	22.7	23.4	22.0	22.2	22.5	22.7	23.4
	12H	22.0	22.2	22.5	22.7	23.3	22.0	22.2	22.5	22.7	23.3
12H	4H	21.7	22.1	22.2	22.5	22.9	21.7	22.1	22.2	22.5	22.9
	6H	21.9	22.2	22.4	22.7	23.3	21.9	22.2	22.4	22.7	23.3
	8H	21.9	22.1	22.5	22.7	23.3	21.9	22.1	22.5	22.7	23.3
Variation of the observer position for the luminaire distance S											
S = 1.0H		2.5 / -2.3					2.5 / -2.3				
S = 1.5H		4.6 / -3.1					4.6 / -3.1				
S = 2.0H		6.3 / -3.8					6.3 / -3.8				
Standard table		n/a					n/a				
Correction summand		n/a					n/a				
Corrected glare indices referring to 1159 lm total luminous flux											